

<b>PRODUCT NAME</b>		<b>CARAMEL PUFFS</b>	
<b>CUSTOMER NAME</b>	LIPARI FOODS		
<b>PRODUCT ITEM CODE</b>			
<b>PRODUCT DESCRIPTION</b>	CARAMEL PUFFS PACKAGED IN CLEAR FILM IN 8OZ. BAGS		
<b>UPC PRODUCT CODE</b>	0 49646 90176 0	<b>UPC CASE CODE</b>	0 49646 90176 0
<b>CERTIFICATIONS</b>			
<b>RECIPE TO BE USED</b>	COPPER KETTLE CARAMEL PUFFS		
<b>INGREDIENTS</b>	SUCROSE, CORN SYRUP, PUFFCORN (DEGERMINATED YELLOW CORN MEAL, VEGETABLE OIL(MAY CONTAIN ONE OR MORE OF THE FOLLOWING: CANOLA, CORN, SOYBEAN), SALT, ARTIFICIAL BUTTER FLAVOR), BUTTER (MILK), SOYBEAN OIL, SALT, NATURAL AND ARTIFICIAL FLAVOR, SOY LECITHIN (SOY), BAKING SODA, CARAMEL COLOR		
<b>ALLERGENS</b>	MILK, SOY PRODUCT IS MANUFACTURED IN A FACILITY THAT HANDLES PEANUTS AND TREE NUTS		
<b>NET WEIGHT (FILL WEIGHT)</b>	8oz. (227g)	<b>SHELF LIFE/EXPIRATION/BEST BY</b>	6 MONTHS FROM DATE OF MANUFACTURE
<b>HOW IS THIS PRODUCT PACKAGED?</b>			
<input checked="" type="checkbox"/> <b>FILM</b>		<input type="checkbox"/> <b>TUB</b>	<input type="checkbox"/> <b>BULK BOX</b>
		<input type="checkbox"/> <b>BULK BOX</b>	<input type="checkbox"/> <b>CANISTER</b>
<b>LABEL TYPE</b>	BACKROADS COUNTRY- CARAMEL PUFFCORN LABEL- TO BE APPLIED TO THE FRONT OF THE BAG	<b>FILM MATERIAL</b>	CLEAR FILM
<b>FORMER REQUIRED</b>	7.0		
<b>IN-LINE BAG PRINT REQUIREMENTS</b>	SELL BY DATE, LOT CODE AND TIME		
<b>PHYSICAL PROPERTIES</b>			
<b>QUALITY TEST</b>	<b>TARGET</b>	<b>MINIMUM</b>	<b>MAXIMUM</b>
<b>MOISTURE</b>			
<b>UNCOATED BULK DENSITY</b>			
<b>COATED BULK DENSITY</b>			
<b>BULK DENSITY RATIO</b>			
<b>NUT RATIO</b>	N/A		
<b>APPEARANCE</b>	GOLDEN		
<b>FLAVOR</b>	CARAMEL AND SWEET		

AROMA		SWEET		
<b>MICROBIOLOGICAL ANALYSIS LIMITS</b>				
APC*	<10,000 cfu/g			
COLIFORM*	<50 cfu/g			
YEAST*	<100 cfu/g			
MOLD*	<100 cfu/g			
E. COLI	<10 cfu/g			
SALMONELLA*	NEGATIVE			
<b>CASE PACK SPECIFICATIONS</b>				
BOX TO BE USED	22738- DRS-10	CASE COUNT	72 CASES PER SKID	
CASE LABEL REQUIREMENTS	CUSTOMER NAME, PRODUCT NAME, BAG WEIGHT, LOT NUMBER, SELL BY DATE AND COUNTRY OF ORGIN U.S.A.			
ALLERGEN STICKER FOR CASE REQUIRED	NOT REQUIRED			
PALLET TYPE	48X40	PALLET STACKING CONFIGURATION (TI-HI)	8x9	
ADDITIONAL INFORMATION REQUIRED BY CUSTOMER				
PALLET WRAP REQUIREMENT	Normal Pallet Wrap			
PALLET LABEL REQUIREMENT	CUSTOMER NAME, P.O.#, S.O.#, DATE, TIME, QTY, SKID#, PRODUCT BEING PRODUCED, BEST BY DATE AND LOT#			
LIFE OF PRODUCT RETAINS REQUIRED, HOW LONG	6 MONTHS FROM MANUFACTURE DATE			
PRODUCT SAMPLES REQUIRED FOR CUSTOMER				
PRODUCT SAMPLES PULLED FOR COA TESTING REQUIRED	YES ONE EVERY HOUR			
LOT CODE EXPLANATION(SIP)	We use the Julian Date Example: 18918 – 189 = the day of the year of manufacture 18= the year of manufacture Bag Code- 1891407 = 189 the day of the year of manufacture 1407-the time the bag was produced (military time) - 2:07 p.m.			
STORAGE	Store finished product in ambient temperature less than 75 °F			
<b>PROCESS CONTROLS AND QC CHECKS</b>				
QUALITY SPECIFICATION TESTING REQUIRED	TEST METHOD	CRITERIA	FREQUENCY	BY WHOM
RATIO	WEIGHT OF COATED CORN DIVEDED BY WEIGHT OF UNCOATED CORN	USE 1 CUBIC. FT. TUBS	HOURLY	LEAD/SUPERVISOR

<b>MOISTURE CHECK</b>	<i>MOISTURE TEST MACHINE</i>	<i>GRIND AND TEST 10-20g. OF PRODUCT</i>	<i>HOURLY</i>	<i>LEAD/SUPERVISOR</i>
<b>WEIGHT VERIFICATION</b>	<i>TARE SCALE WEIGH BAGS</i>	<i>5 CONSECUTIVE BAGS</i>	<i>HOURLY</i>	<i>LEAD/SUPERVISOR</i>
<b>SENSORY</b>	<i>OBSERVE, TASTE &amp; CHEW</i>	<i>VERIFY GOOD FLAVOR, COLOR, TEXTURE AND CRUNCH</i>	<i>HOURLY</i>	<i>LEAD/SUPERVISOR</i>
<b>BAG SEAL &amp; INTEGRITY</b>	<i>VISUAL</i>	<i>NO BURNED SEALS, GOOD CUT, AND NO AIR LEAKS</i>	<i>HOURLY</i>	<i>LEAD/SUPERVISOR</i>
<b>BAG PRINT</b>	<i>VISUAL</i>	<i>VERIFY CORRECT DATE CODE AND GOOD PRINT</i>	<i>HOURLY</i>	<i>LEAD/SUPERVISOR</i>
<b>CASE PRINT</b>	<i>VISUAL</i>	<i>CORRECT INFO ON LABELS AND GOOD PRINT</i>	<i>HOURLY</i>	<i>LEAD/SUPERVISOR</i>
<b>CASE CONDITION</b>	<i>VISUAL</i>	<i>GOOD, CLEAN AND STURDY BOXES</i>	<i>HOURLY</i>	<i>LEAD/SUPERVISOR</i>
<b>CASE COUNT</b>	<i>VISUAL</i>	<i>OPEN FINISHED CASE AND VERIFY PROPER COUNT</i>	<i>HOURLY</i>	<i>LEAD/SUPERVISOR</i>
<b>TUB SEAL &amp; INTERGRITY (if packaged in tubs)</b>	<i>VISUAL</i>	<i>LID IS ON STRAIGH &amp; TIGHT, SEAL IS ON STRAIGHT * COMPLETELY SEALS THE TUB</i>	<i>HOURLY</i>	<i>LEAD/SUPERVISOR</i>
<b>TUB PRINT (if packaged in tubs)</b>	<i>VISUAL</i>	<i>VERIFY CORRECT DATE CODE AND GOOD PRINT</i>	<i>HOURLY</i>	<i>LEAD/SUPERVISOR</i>
<b>TRAY CONDITION (if packaged in trays)</b>	<i>VISUAL</i>	<i>GOOD, CLEAN AND STURDY TRAY</i>	<i>HOURLY</i>	<i>LEAD/SUPERVISOR</i>
<b>TRAY COUNT (if packaged in trays)</b>	<i>VISUAL</i>	<i>VERIFY THE CORRECT AMOUNT OF TUBS ARE ON THE TRAY</i>	<i>HOURLY</i>	<i>LEAD/SUPERVISOR</i>
<b>PALLET LABEL</b>	<i>VISUAL</i>	<i>USE THE PALLET LABEL SET UP IN COMPUTER FOR PRODUCT BEING PRODUCED</i>	<i>HOURLY</i>	<i>LEAD/SUPERVISOR</i>
<b>PALLET STACKING</b>	<i>VISUAL</i>	<i>VERIFY THE PALLET TI-HI IS CORRECT FOR THE ORDER</i>	<i>HOURLY</i>	<i>LEAD/SUPERVISOR</i>
<b>METAL DETECTION</b>	<i>TEST BALLS/TEST STICKS</i>	<i>WHEN USING THE TEST BALLS DROP BALLS INTO SCALE BUCKET ONE AT A TIME. PASSING ALARM WILL SOUND, MESSAGE APPEARS ON SCREEN AND BAG WON'T CUT. DOUBLE OR TRIPLE BAGS WILL BE PRODUCED. WHEN USING TEST STICKS DROP STICK IN EITHER TUB OF PRODUCT OR BULK BOX OF PRODUCT AND SEND THROUGH THE PORTABLE METAL DECTECTOR. METAL DETECTOR WILL SOUND WHEN STICK IS DETECTED.</i>	<i>HOURLY</i>	<i>LEAD/SUPERVISOR</i>

Attach case label, pallet label here:

MANUFACTURED FOR LIPARI  
ITEM# 2092

CARMEL PUFFCORN

15ct./ 8oz. Bags

SELL BY : 04/29/20 LOT# 30219  
COUNTRY OF ORIGIN U.S.A.

DATE: 2019 10 29

PALLET#

TIME 09:47

1 OF 3

LIPARI FOODS

PO# 1702226

SO# 24750

PRODUCT:

CARMEL PUFFS#2092

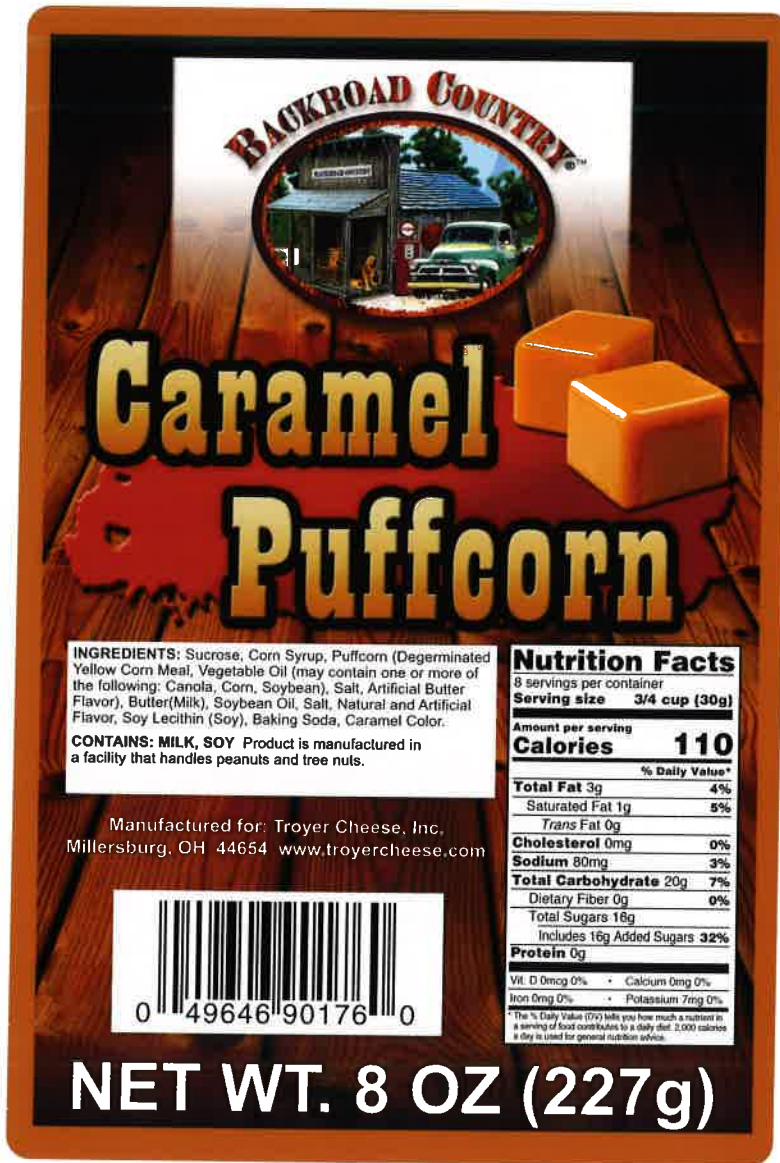
15CT 8 OZ BAGS

LOT#: 30219

SELL BY: 04/29/20

QTY/PALLET: 56

Attach product label if used:



**NUTRITIONAL INFORMATION**